

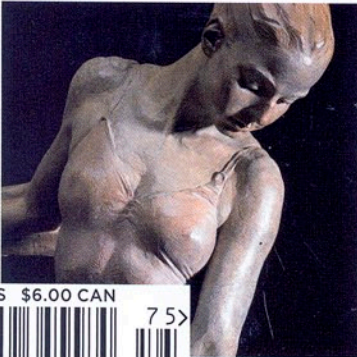
Art
& ANTIQUES

Collector's Sourcebook

INSIDE THE WORLD OF ART AND DESIGN SPECIAL 2007 EDITION



ART DECO DRAMA TAMARA DE LEMPICKA



\$5.00 US \$6.00 CAN
75
70989 34558 4

Contemporary Art at Home | Artist Spotlights | Resort Collection | Print Primer



► Wendy Taylor, "The Square Piece," c. 1990, aluminum. Tiffany Studios, "Wisteria Window" (facing), c. 1902, glass, leading and bronze.

"I may never wear Versace couture, but I love to sit on these chairs," says a resort guest perched on a gilded black-and-white Versace armchair while glancing up at her husband. In the Grand Ballroom, guests stand under eight one-ton Baccarat crystal chandeliers. Only 10 were made; Donald Trump reportedly owns the other two.



Art-Filled GETAWAY

History meets fine art and pop culture at Nemaocolin. **BY ANN COCHRAN**

UPON YOUR APPROACH to Nemaocolin Woodlands Resort and the Hardy Family Art Collection in Farmington, Pennsylvania, you are greeted by Fernando Botero's bronze "Little Bird" at the entrance. Inside, more treasures await. Down a hallway is the world's largest freestanding cylindrical saltwater aquarium, which houses a gold bar from the Spanish galleon *Santa Margarita* that sank near the Florida Keys in a hurricane in 1622. And outside are

even more surprises: Even in snow, a lady in an orange bikini lounges on a chaise. But don't be fooled—this "guest" was cast by noted sculptor J. Seward Johnson Jr.

"My first real investment was a piece of art," says Joseph A. Hardy III, art collector and founder of this 3,000-acre, award-winning property. His appreciation for artistic beauty started at Hardy & Hayes, a family business where he worked part-time during college, surrounded by art and



◀ Fernando Botero, "Little Bird," 1988, bronze.

▼ Pitcairn PA-8 U.S. Mail airplane, 1931.

"Nemacolin" originates from the Delaware Indian chief who blazed a trail in 1740 through the three-county area east of Pittsburgh.



antiques as well as jewelry. His education and experience at the "Tiffany's of Pittsburgh" launched this entrepreneur, who built a practical retail empire: 84 Lumber Company.

The name "Nemacolin" originates from the Delaware Indian chief who blazed a trail in 1740 through the Laurel Highlands, a three-county area east of Pittsburgh and part of the Allegheny mountain range. Hardy bought the property, which had been developed in the 1960s and '70s by wealthy Pittsburgh families, at auction in 1987 and began fashioning it into the world-class resort it is today.

On one of the two championship golf courses, Mystic Rock, Bradley Cooley's "The Squire," a more-than-life-sized bronze of golf legend Gene Sarazen, oversees golfers teeing off at the second hole. Bronzes of John Daly and Vijay Singh stand in other areas of the course. More than one ball has sailed through "The Square Piece," an aluminum sculpture by contemporary British sculptor Wendy Taylor.

Walking through the resort's library past Frederic Remington's sculpture "The Rattlesnake," Hardy points to a volume of John James Audubon's *Birds of America*, its expansive pages lying open and lit by authentic Tiffany table and floor lamps. "The public can thumb through and see Audubon's work up close," says Hardy, who is proud of having private art on public display for resort guests and visitors. Sharing what he finds beautiful or interesting drives this collector, who consults with his art collection specialist, Brenda Sorice, on every new acquisition by asking her how she thinks people would react.

The maximum accessibility Hardy encourages is evidenced by the tour buses and school groups that frequent Nemacolin. Tours are offered daily and are provided by the art collection staff. While there are some gallery-like spaces, most of the art is installed or placed throughout the buildings and grounds as it would be at a private estate. To have such

advertisement

Guests are surrounded by the art of Henri de Toulouse-Lautrec, Jules Chéret and others.



▲ Clockwise, from above: Gianni Versace, Versace chair, 20th century; Henri de Toulouse-Lautrec, "Jardin de Paris: Jane Avril," 1893, color lithography; Tiffany Studios, floor lamp, late 19th century, glass, leading and bronze.

riches out in the open is a risk, but it is one that Hardy does not hesitate to take. Fortunately, even young guests rise to the occasion

around the fine collectibles. Security is so unobtrusive it's hardly noticeable. "We have not had as much damage as one might imagine," Sorice says, "and the restorers we work with can take care of almost anything."

The art collection is the main event for visitors, who stare in awe before eclectic riches such as two full Tiffany windows, a

section of the Berlin Wall, clothing worn by Marilyn Monroe and Elvis, a Tony Bennett seascape, a silver cup Mark Twain presented to Andrew Carnegie and the entire original newspaper article reporting George Washington's death. Commissions as well as acquisitions are evidenced by bronze statues that honor the heritage of the Laurel Highlands—likenesses of Chief Nemaocolin,

advertisement

The collection includes eclectic riches such as two Tiffany windows and a section of the Berlin Wall.

▼ Section of the Berlin Wall with graffiti, 1961-89.



General Lafayette, George Washington—and Joe Hardy himself.

Accommodations at Nemacolin are as diverse as the art and include the French Renaissance-style Chateau LaFayette, an English Tudor-style lodge, and townhouses. The newest addition, Falling Rock, which quickly earned AAA Five Diamond status, is an homage to Frank Lloyd Wright, influenced by his nearby Fallingwater and Kentucky Knob houses. The fine-dining restaurant, Lautrec, has been named one of *Pittsburgh Magazine's* Top 25 Restaurants every year since 2004, despite its location 70 miles away. Guests are surrounded by the art of Henri de Toulouse-Lautrec, Jules Chéret and others. Suspended above the stairs to the wine cellar is an Alexander Calder mobile. It is notable for its small size, unusual for Calder.

If it strikes one's fancy, some of the beauty on display is for sale, including a 1913 Ford Model T Speedster and a 1909 12-passenger Stanley Steamer Mountain Wagon. Just down the road from the treasures in the Auto Toy Store is the Air Hangar housing a 1931 Pitcairn PA-8, a rare U.S. Mail plane, once owned by actor Steve McQueen. "Those who believe a vehicle is simply for transportation from A to B have missed the point altogether," Hardy says. "With these machines, I have an appreciation for owning a piece of history."

If he decides to sell his 1928 Bugatti Type 38A Grand Sports Tourer or the 1936 Cord Phaeton that Franklin Delano Roosevelt rode in while campaigning, he will have fun buying replacements.

In addition to the award-winning Woodlands Spa, Nemacolin features a shooting academy, winter sports, off-road driving and a 55,000-square-foot shopping arcade. Guests arriving by air can land at the resort's private airfield. ☒

Nemacolin Woodlands Resort

1001 LaFayette Dr., Farmington, PA 15437.
866.399.6957. www.nemacolin.com.